

Get Peace of Mind with HMSA Akamai Advantage

Attend a **FREE Medicare Advantage health plan sales seminar.**

Seating is limited, so reserve your spot today.

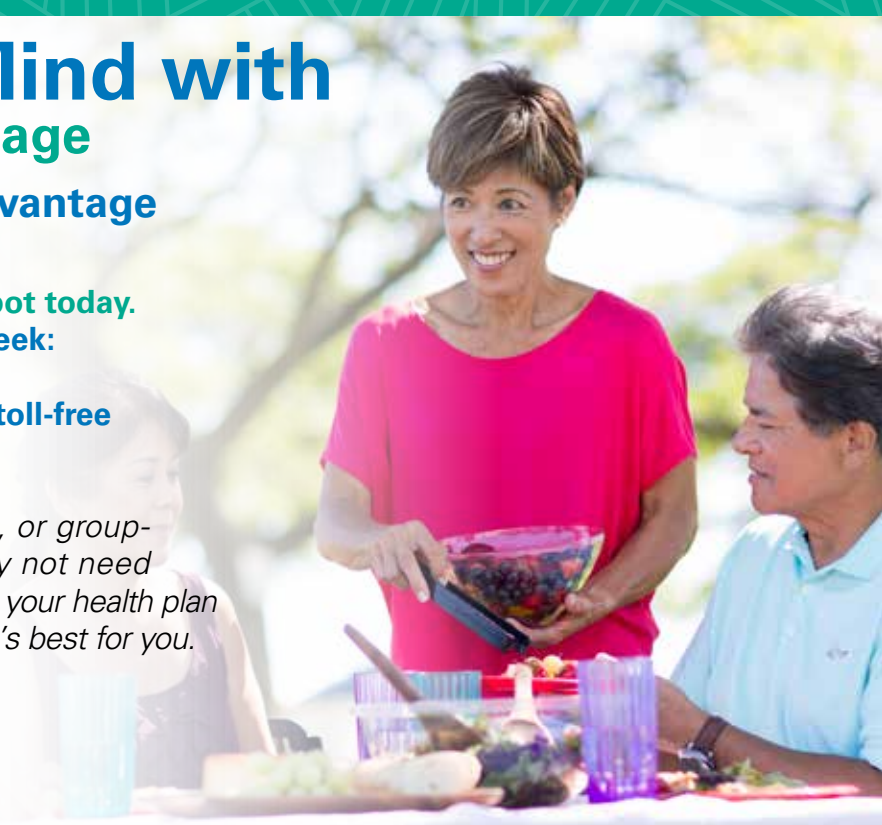
Call 8 a.m. to 8 p.m., seven days a week:

- Oahu: 948-6402
- Neighbor Islands: 1 (800) 252-4137 toll-free
- TTY users: 711

If you qualify for or have state, federal, or group-sponsored retiree health plan, you may not need HMSA Akamai Advantage®. Please talk to your health plan administrator or group leader to see what's best for you.



An Independent Licensee of the Blue Cross and Blue Shield Association



Session Date	Time	Location
OAHU		
Thursday, November 9, 2017	9:30 a.m.	HMSA Center @ Honolulu, 818 Keeaumoku St.
Thursday, November 9, 2017	11 a.m.	Ewa Beach Library, 91-950 North Rd.
Thursday, November 9, 2017	1 p.m.	HMSA Center @ Honolulu, 818 Keeaumoku St.
Monday, November 13, 2017	9:30 a.m.	HMSA Center @ Pearl City, 1132 Kuala St., Suite 400
Monday, November 13, 2017	10 a.m.	My Go Center, 590 Farrington Hwy. #504, Kapolei
Monday, November 13, 2017	10:30 a.m.	IHOP Restaurant Pearl City, 96-1258 Kaahumanu St.
Monday, November 13, 2017	1 p.m.	HMSA Center @ Pearl City, 1132 Kuala St., Suite 400
Monday, November 13, 2017	1 p.m.	Premier Benefits Consultants Office, 1221 Kapiolani Boulevard #PH30, Honolulu <i>(Presented in Japanese)</i>
Tuesday, November 14, 2017	10 a.m.	Denny's Restaurant - Kaneohe, 45-480 Kaneohe Bay Dr.
Wednesday, November 15, 2017	9:30 a.m.	HMSA Center @ Honolulu, 818 Keeaumoku St.
Wednesday, November 15, 2017	10 a.m.	Zippy's Makiki, 1222 S. King St., Honolulu
Wednesday, November 15, 2017	1 p.m.	HMSA Center @ Honolulu, 818 Keeaumoku St.
Thursday, November 16, 2017	10:30 a.m.	Ruby Tuesday Restaurant Mililani, 95-1249 Meheula Parkway

(continued on next page)

A sales representative will be present with information and applications. For accommodation of persons with special needs at sales meetings, call 948-6235 on Oahu or 1 (800) 693-4672 toll-free Monday through Friday, 8 a.m. to 8 p.m. For TTY, call 711.

HMSA Akamai Advantage is a PPO and Essential Advantage is an HMO plan with a Medicare contract. Enrollment in HMSA Akamai Advantage and Essential Advantage depends on contract renewal.

Session Date	Time	Location
OAHU		
Thursday, November 16, 2017	1 p.m.	Aina Haina Public Library, 5246 Kalaniana'ole Hwy., Honolulu
Monday, November 20, 2017	9:30 a.m.	HMSA Center @ Honolulu, 818 Keeaumoku St.
Monday, November 20, 2017	1 p.m.	HMSA Center @ Honolulu, 818 Keeaumoku St.
Monday, November 20, 2017	1 p.m.	Premier Benefits Consultants Office, 1221 Kapiolani Boulevard #PH30, Honolulu <i>(Presented in Japanese)</i>
Tuesday, November 21, 2017	10:30 a.m.	Happy Day Chinese Seafood Restaurant, 3553 Waiialae Ave., Honolulu
Wednesday, November 22, 2017	10:30 a.m.	Liliha Public Library, 1515 Liliha St., Honolulu
Monday, November 27, 2017	10 a.m.	St. Louis Clubhouse, 916 Coolidge St., Honolulu
Monday, November 27, 2017	1 p.m.	Premier Benefits Consultants Office, 1221 Kapiolani Boulevard #PH30, Honolulu <i>(Presented in Japanese)</i>
Tuesday, November 28, 2017	9:30 a.m.	HMSA Center @ Pearl City, 1132 Kuala St., Suite 400
Tuesday, November 28, 2017	10:30 a.m.	Maple Garden Restaurant, 909 Isenberg St., Honolulu
Tuesday, November 28, 2017	1 p.m.	HMSA Center @ Pearl City, 1132 Kuala St., Suite 400
Thursday, November 30, 2017	9:30 a.m.	HMSA Center @ Honolulu, 818 Keeaumoku St.
Thursday, November 30, 2017	10:30 a.m.	Ruby Tuesday Restaurant Mililani, 95-1249 Meheula Parkway
Thursday, November 30, 2017	1 p.m.	Aina Haina Public Library, 5246 Kalaniana'ole Hwy., Honolulu
Thursday, November 30, 2017	1 p.m.	HMSA Center @ Honolulu, 818 Keeaumoku St.
Thursday, November 30, 2017	2 p.m.	Max's Restaurant, 94-300 Farrington Hwy., Waipahu
Wednesday, December 6, 2017	10:30 a.m.	Happy Day Chinese Seafood Restaurant, 3553 Waiialae Ave., Honolulu
HAWAII		
Monday, November 13, 2017	10 a.m.	Keaau Public & School Library, 16-571 Keaau Paho Rd.
Tuesday, November 14, 2017	9 a.m.	HMSA Office, 75-1029 Henry St., Suite 301, Kailua-Kona
Tuesday, November 14, 2017	1 p.m.	HMSA Office, 75-1029 Henry St., Suite 301, Kailua-Kona
Thursday, November 16, 2017	10 a.m.	Sangha Hall-Honpa Hongwanji Hilo Betsuin, 398 Kilauea Ave., Hilo
Thursday, November 16, 2017	10 a.m.	Sangha Hall-Honpa Hongwanji Hilo Betsuin, 398 Kilauea Ave., Hilo <i>(Japanese translator available)</i>
Friday, November 17, 2017	10 a.m.	West Hawaii Community Health Center, 75-5751 Kuakini Hwy. #104, Kailua-Kona
Monday, November 27, 2017	10 a.m.	Sangha Hall-Honpa Hongwanji Hilo Betsuin, 398 Kilauea Ave., Hilo
Tuesday, November 28, 2017	9 a.m.	HMSA Center @ Hilo, 303A E. Makaala St., Hilo
Tuesday, November 28, 2017	1 p.m.	HMSA Center @ Hilo, 303A E. Makaala St., Hilo
KAUAI		
Monday, November 20, 2017	9 a.m.	HMSA Office, 4366 Kukui Grove St., Suite 103, Lihue
Monday, November 20, 2017	1 p.m.	HMSA Office, 4366 Kukui Grove St., Suite 103, Lihue

A sales representative will be present with information and applications. For accommodation of persons with special needs at sales meetings, call 948-6235 on Oahu or 1 (800) 693-4672 toll-free Monday through Friday, 8 a.m. to 8 p.m. For TTY, call 711.

HMSA Akamai Advantage is a PPO and Essential Advantage is an HMO plan with a Medicare contract. Enrollment in HMSA Akamai Advantage and Essential Advantage depends on contract renewal.